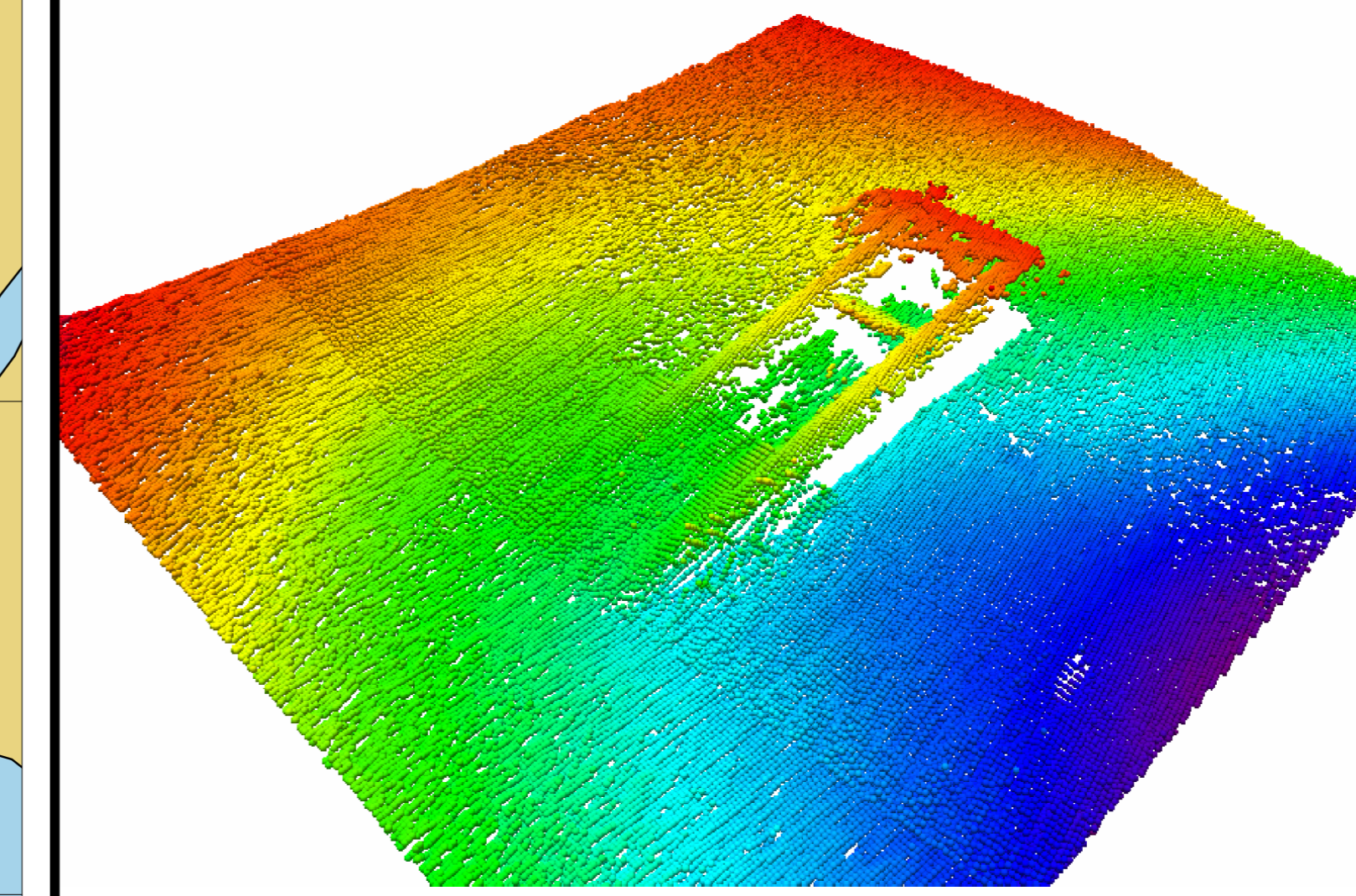
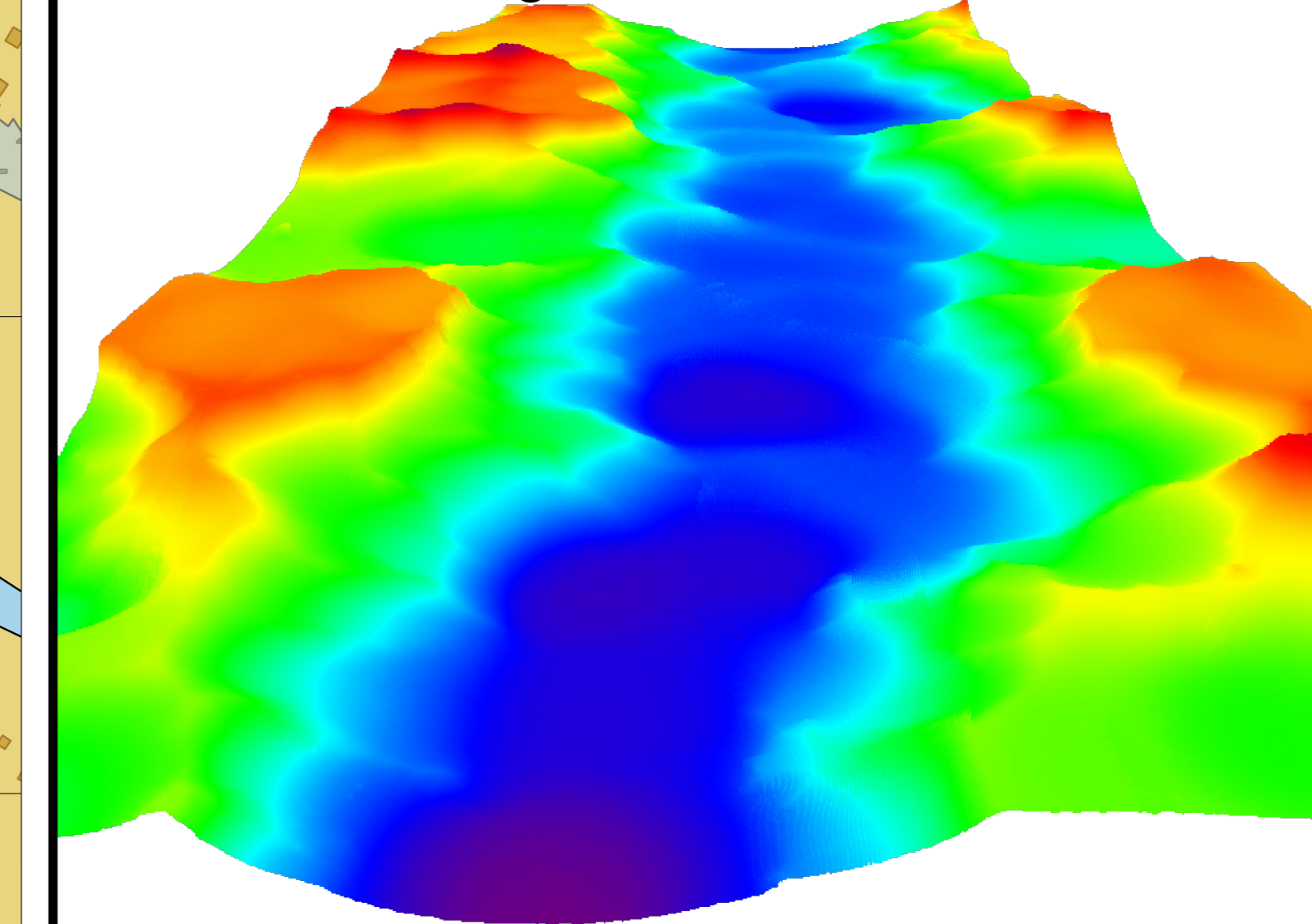


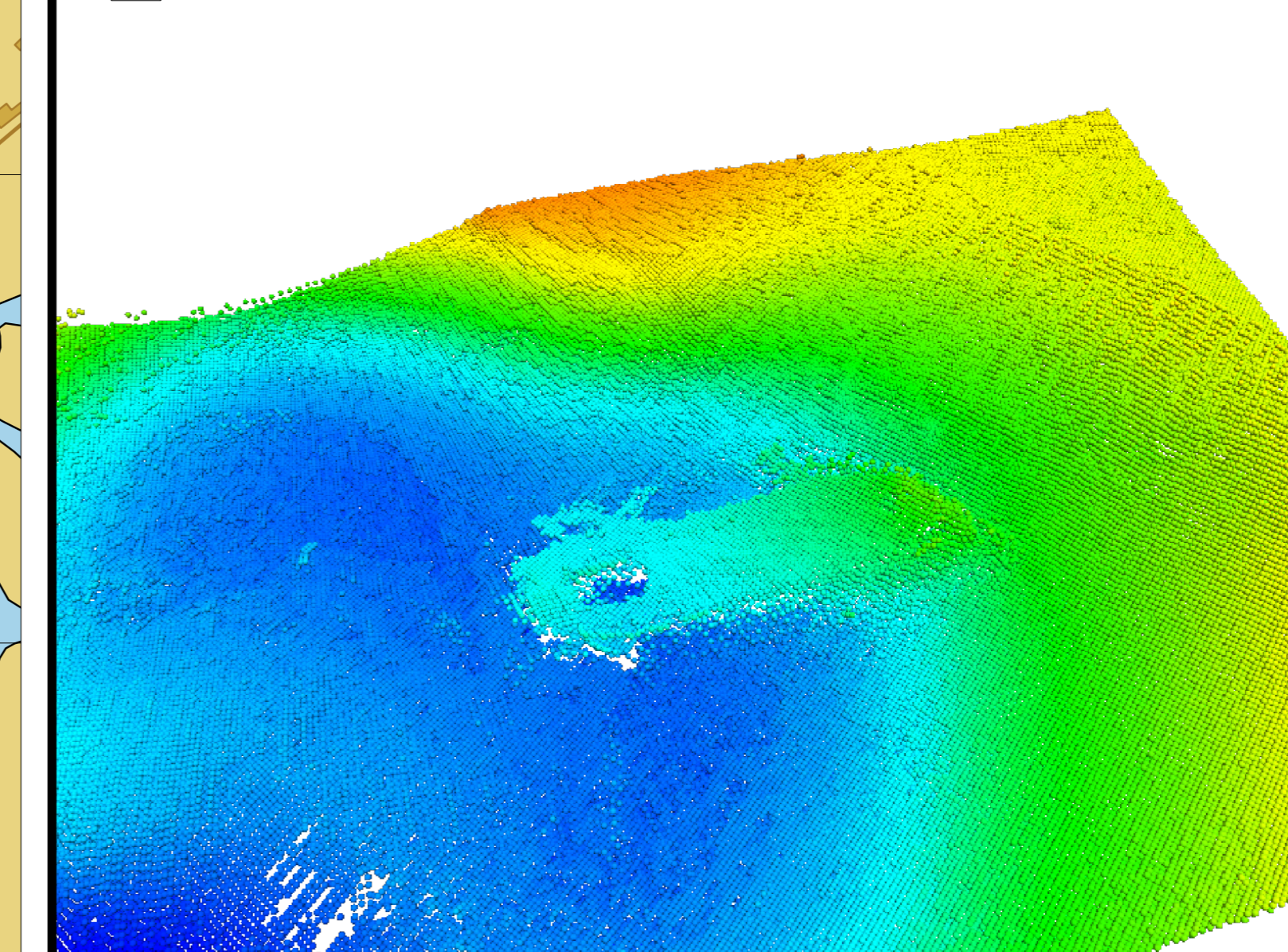
A View of a wreck in 3D



B View of dredge marks in 3D



C View of a wreck in 3D



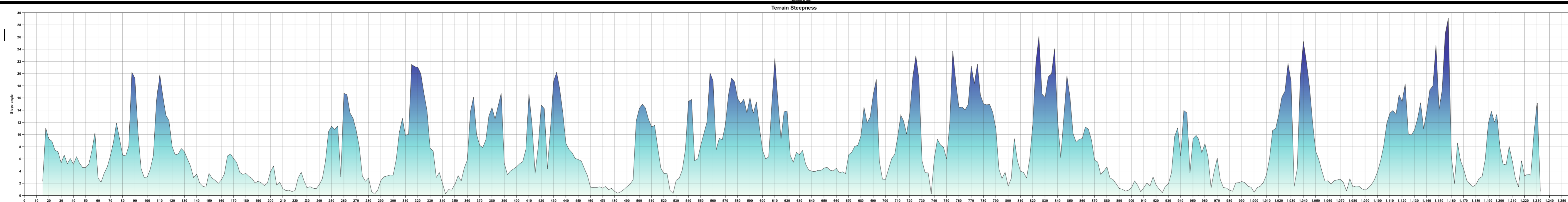
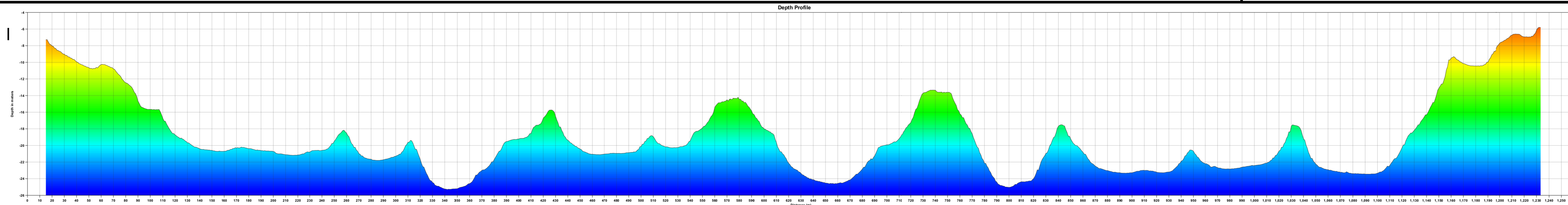
CARIS LAKE SURVEY 2014

In cooperation with:



Made possible by:
 Natuurmonumenten, Hoogheemraadschap Amstel, Gooi en Vecht, Gemeente Wijdemeren, Ottenhome Marina.

Location	De Wijde Blik, Kortenhoeft The Netherlands
Acquisition software	EIVA NaviPac EIVA NaviScan
Processing software	CARIS HIPS and SIPS CARIS BASE Editor
Survey vessel	Karnic
Multibeam sonar	R2Sonic 2022
Navigation sensor	Stema-Systems GNSS982 06-GPS VRS Network
Motion Reference Unit	Ixblue Octans IV
Date survey	June 30th to July 4th 2014
Horizontal datum	Bessel 1841
Vertical datum	NAP
Coordinate system	Rijksdriehoekstelsel
Projection	Stereographic
Scale	1 : 3200



Executed by students of the Maritime Institute Willem Barentsz

- Jeroen Daams
- Camiel Hinderink
- Arjen Medema
- Rein Ritzema
- Mick Schickendantz
- Robin Stadt
- Jelle Tamminga
- Reinier de Weger
- Johan Zegers
- Mark Zevenberg

Made for scientific and educational purposes only,
not intended to be used for navigation